



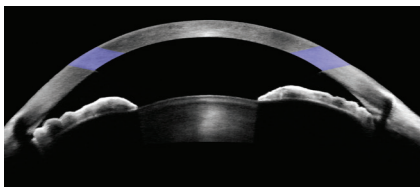
CIRRUS HD-OCT 4000 and 400

Advancing SMART OCT for Anterior Segment, Retina & Glaucoma

Add SMART OCT imaging to your practice with the new Anterior Segment Premier Module, plus get new insights from CIRRUS SmartCube™ with new En Face Views and PanoMap™ Wide-Field Analysis.

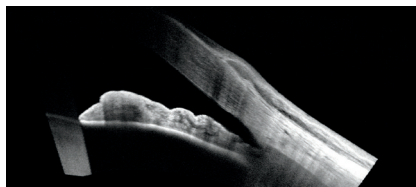
Anterior Segment Premier Module

Full anterior chamber imaging and exquisite detail of the iridocorneal angle and cornea with new external lenses



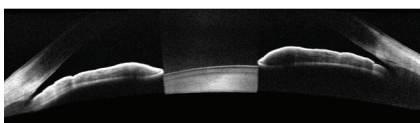
ChamberView™

ChamberView Image* – ChamberView provides an expansive 15.5 mm wide view of the entire anterior chamber to help identify patients at risk for angle closure glaucoma



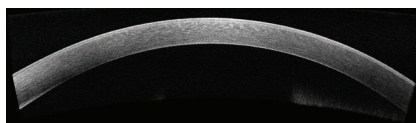
HD Angle of narrow angle with pterygium

HD Angle Scan – High-resolution 6 mm angle image shows key anatomical landmarks including scleral spur to aid in the evaluation of the anterior chamber angle configuration



Wide Angle-to-Angle

Wide Angle-to-Angle Scan – Dual angle assessment with a 15.5 mm limbus to limbus view of the iris configuration



HD Cornea

HD Cornea Scan – 9 mm high-resolution scan ideal for assessing corneal health and pathology

External lenses combine with software to offer superior anterior segment imaging:

- Two interchangeable lenses expand CIRRUS™ HD-OCT with corneal, anterior chamber, and wide angle-to-angle imaging
- Magnetic lens attachment makes switching to external lenses easy and fast
- Ergonomic lens design enables a comfortable 22-38 mm working distance from the patient's eye



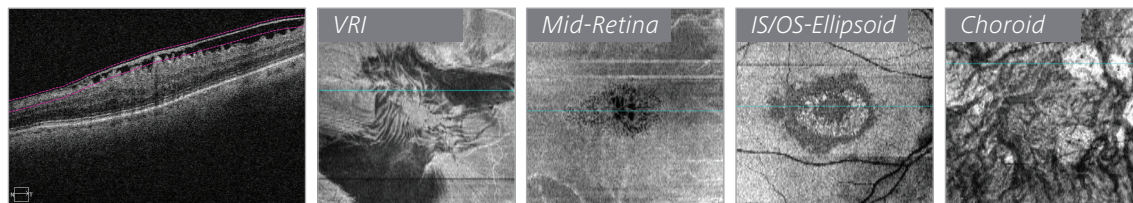
*Patent pending



We make it visible.

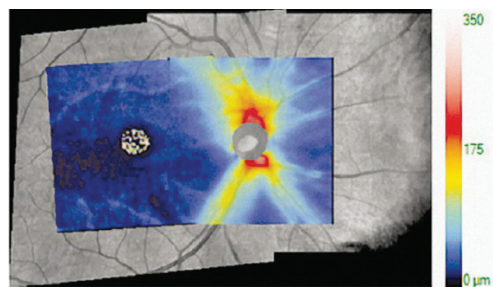
Layer by Layer En Face Views

Easily isolate layers of interest and identify abnormalities with new En Face clinical presets

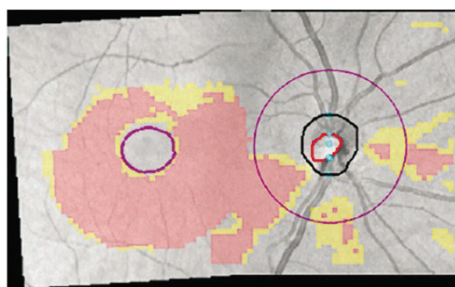


PanoMap™ Wide-Field Analysis

PanoMap displays structural data for the entire posterior pole using existing Macular Cube and Optic Disc Cube scans, without altering scan protocols. RNFL, ONH and GCA metrics show the extent of structural damage.



Wide-Field RNFL Thickness Map



Combined GCA and RNFL Deviation Map

Technical Data

CIRRUS HD-OCT 4000 and 400

New Software Version 7.6 includes:

En Face Analysis

PanoMap Analysis*

FastTrac™ (Model 4000 Quad Core PC only)

Anterior Segment Basic Imaging

Optional Licensed Features:

Anterior Segment Premier Module with External Lens Kit

ChamberView 15.5 mm x 5.8 mm

Wide Angle-to-Angle 15.5 mm x 2.9 mm

HD Cornea 9 mm x 2 mm

HD Angle 6 mm x 2.9 mm

CIRRUS Review Software

Support Operating Systems

Windows® 7 and 8.1

Windows Server 2012 R2

Windows Server 2008 R2

CIRRUS HD-OCT 4000 and 400

Minimum System Requirements

Operating System: Windows 7

A Windows 7 Upgrade Program may be available for your CIRRUS 4000 or 400, if it is currently running Windows XP. Please contact your local representative for details.



Carl Zeiss Meditec, Inc.
5160 Hacienda Drive
Dublin, CA 94568
USA
www.zeiss.com/med



Carl Zeiss Meditec AG
Goeschwitzer Strasse 51–52
07745 Jena
Germany
www.zeiss.com/med

*Requires Ganglion Cell Analysis License

CIR-7273 Printed in USA. CZ-07/2015
 The contents of this application note may differ from the current status of approval of the product in your country. Please contact your regional representative for more information. Subject to change in design and scope of delivery and as a result of ongoing technical development. CIRRUS, SmartCube, ChamberView, PanoMap and FastTrac are either trademarks or registered trademarks of Carl Zeiss Meditec, Inc. in the United States and/or other countries. © 2015 Carl Zeiss Meditec, Inc. All copyrights reserved.